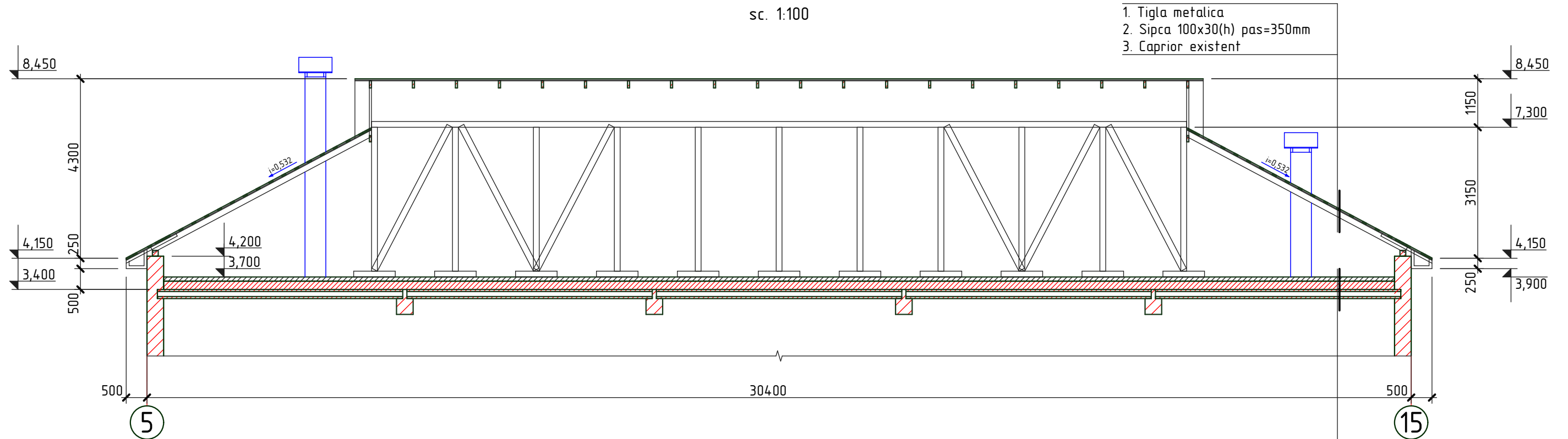


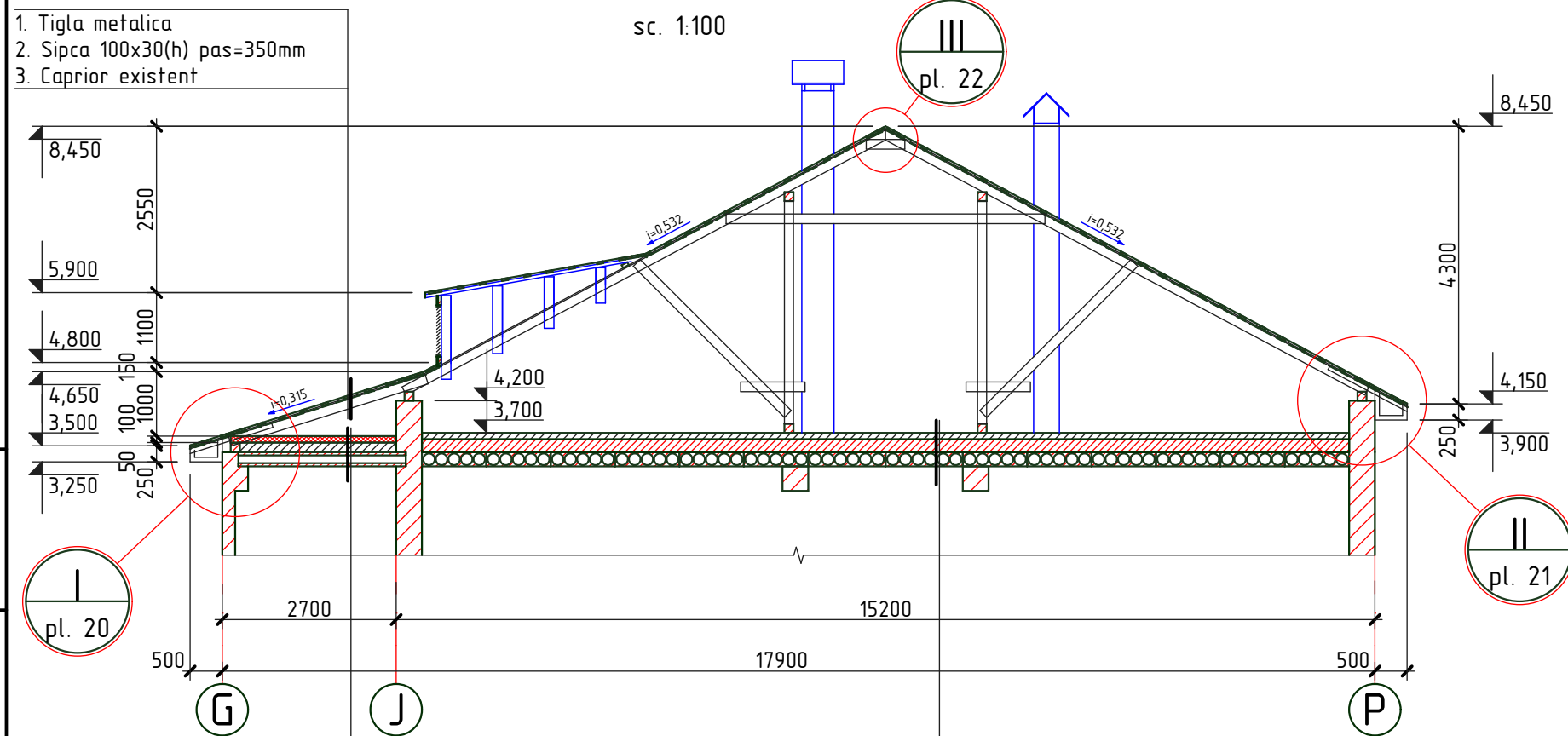
## Sețiunea A-A

sc. 1:100

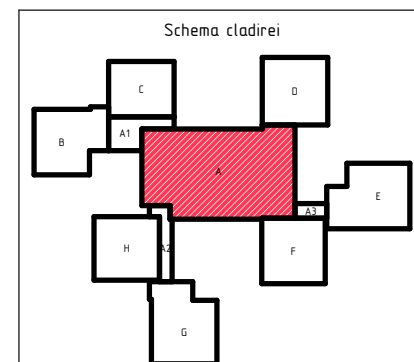


## Sețiunea B-B

sc. 1:100



1. Membrana antivânt "TEND"
2. Incalzitor existent din vata minerala
3. Membrana anticondens
4. Invelis existent de acoperis  $\delta=250\text{mm}$
5. Planseu existent



1. Membrana antivânt "TEND"
2. Termoizolant: vata minerala bazaltica, ignifuga  
 $\gamma=125 \text{ kg/m}^3$ ,  $\lambda=0,037 \text{ W/mk}$ ,  $\delta=100\text{mm}$
3. Membrana contravapori "TEND"
4. Invelis existent de acoperis  $\delta=250\text{mm}$
5. Planseu existent

1. Membrana antivânt "TEND"
2. Incalzitor existent din vata minerala
3. Membrana anticondens
4. Invelis existent de acoperis  $\delta=250\text{mm}$
5. Planseu existent

1. Specificatia materialelor vezi pl. 23.

2020	28.07-D/20-SAC			Reparatia capitala a acoperisului scolii primare nr. 21 "S. Vangheli" din str. Tudor Vladimirescu 16			
A.S.P	Mihaila V.		07.20	Scoala primara Bloc A	faza	plansa	planse
I.S.P	Hihlat Em.		07.20		PE	19	
Elaborat	Mihaila V.		07.20	Sețiunea A-A si B-B		"GEO-CAD-PROIECT"	
						mun. Balti	